

Specifications

Model	7591
Color	Faux Wood Grain Cover White Water Tank
Capacity	500 ml / 17 fl oz
Run Time	Up to 8 hours
Features	On/ Off, 3 Color Changing LED Light: Blue, Green, and Red
Coverage	400 square feet
Rated Power	12W
Adapter Power	100-240V, 24V0.5A

Troubleshooting

SYMPTOM	CAUSE	SOLUTION
Cannot smell oil when unit starts	Majority of the oil is still in the water tank	Add an additional 3-5 drops of oil in the water when starting
No mist	Using incorrect water, distilled or purified	Use Tap Water (without filter)
	Too much water released or unit is out of water	Add additional water
		Dump excess base water, replace tank & turn power on, Do not move unit once the tank has been placed on top of the base.
No mist or little mist	Tap water is too cold	Empty tank and refill with lukewarm tap water
	Water level is higher than max level line	Clean unit and add water 1/2 way to fill line and additional water after getting mist.
Blinking Lights	Water level indicator is dirty	Clean unit as advised. Pay particular attention to swab the sensor/disc inside the bottom of unit.
Unit will not stop running even though empty	Water level indicator is dirty	Clean unit as advised. Pay particular attention to swab the sensor/disc inside the bottom of unit.

CAUTION: Keep away from children and pets.

This diffuser has a 1 year manufacturer guarantee.
Please call customer service at 1-888-548-0040 for assistance.
Do not return it to the retailer.

Distributed by NOW Foods
Bloomington, IL 60108, U.S.A.
nowfoods.com/nowsolutions

Customer Service 888-548-0040

Product of China

Essential Oil Info

NOW® Solutions’ essential oils are genuine reflections of the botanicals of which they're born. This wide array of essential oils is comprised of pure and natural extracts. The science of producing essential oils has evolved significantly over the years. These days producing essential oil that’s highly concentrated, identity verified, and beneficial is a craft that involves a delicate balance of art and science that cannot be compromised. Fresh botanicals bursting with vitality, strict attention to detail, and meticulous extraction methods are what separate the elite essential oils from the run-of-the-mill natural and synthetic oils you’ll find on the market today. At NOW we take the quality and safety of our essential oils very seriously, and we take great pride in ensuring that every oil we produce is brought to you in a manner that’s scientifically and environmentally responsible.



For more information visit nowfoods.com/nowsolutions.



Ultrasonic Faux Wood Grain Oil Diffuser
nowfoods.com/nowsolutions

instructions & care

Essential Oil Recipes

Balancing Blends

Daily Balance

Add the following oils to a diffuser and enjoy:

- 2 drops of NOW® Geranium Oil
- 2 drops of NOW® Rose Absolute Oil
- 2 drops of NOW® Clary Sage Oil

Mind Ease

Add the following oils to a diffuser and enjoy:

- 3 drops of NOW® Lavender Oil
- 3 drops of NOW® Peppermint Oil
- 3 drops of NOW® Chamomile Oil

Purifying Blends

Purifying Room

Add the following oils to a diffuser and enjoy:

- 1 drop of NOW® Tea Tree Oil
- 1 drop of NOW® Grapefruit Oil
- 10 drops of NOW® Lemon Oil

Spring Cleaning

Add the following oils to a diffuser and enjoy:

- 10 drops of NOW® Lemongrass Oil
- 5 drops of NOW® Lemon Oil
- 1 drop of NOW® Eucalyptus Oil

Uplifting Blends

Orange You Delightful

Add the following oils to a diffuser and enjoy:

- 10 drops of NOW® Orange Oil
- 25 drops of NOW® Vanilla Concentrate Oil

Energizing

Add the following oils to a diffuser and enjoy:

- 1 drop of NOW® Peppermint Oil
- 1 drop of NOW® Rosemary Oil
- 2 drops of NOW® Cinnamon Leaf Oil

Relaxing Blends

Peace of Mind

Add the following oils to a diffuser and enjoy:

- 10 drops of NOW® Lavender Oil
- 6 drops of NOW® Chamomile Oil

Calming Night

Add the following oils to a diffuser and enjoy:

- 4 drops of NOW® Cypress Oil
- 4 drops of NOW® Lavender Oil
- 4 drops of NOW® Marjoram Oil

Romance Blends

Love is in the Air

Add the following oils to a diffuser and enjoy:

- 1 drop of NOW® Patchouli Oil
- 3 drops of NOW® Jasmine Absolute Oil
- 5 drops of NOW® Geranium Oil

Things are Just Rosey

Add the following oils to a diffuser and enjoy:

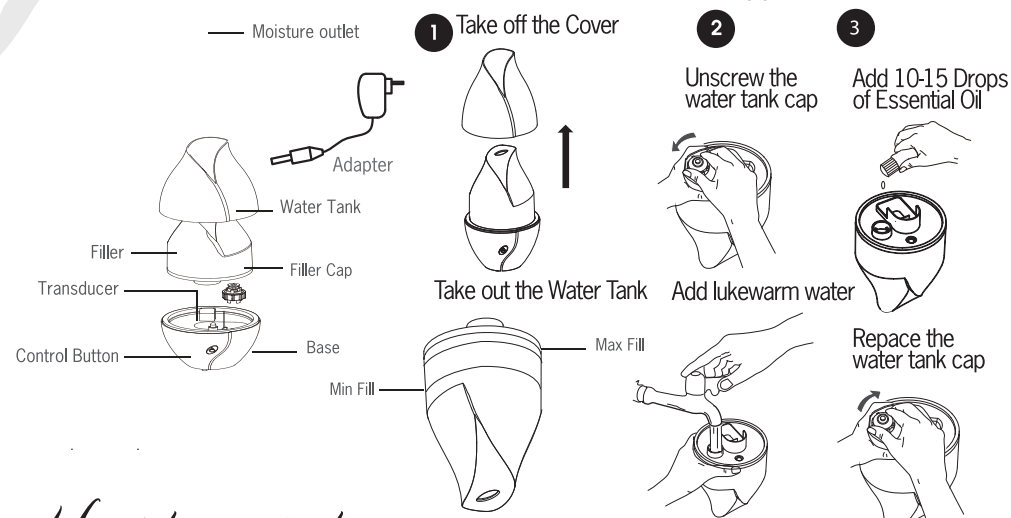
- 1 drop of NOW® Geranium Oil
- 15 drops of NOW® Rose Absolute Oil

Congratulations on your purchase of NOW® Solutions Ultrasonic Faux Wood Grain Oil Diffuser designed for indoor use only. Please read the instructions carefully before using.

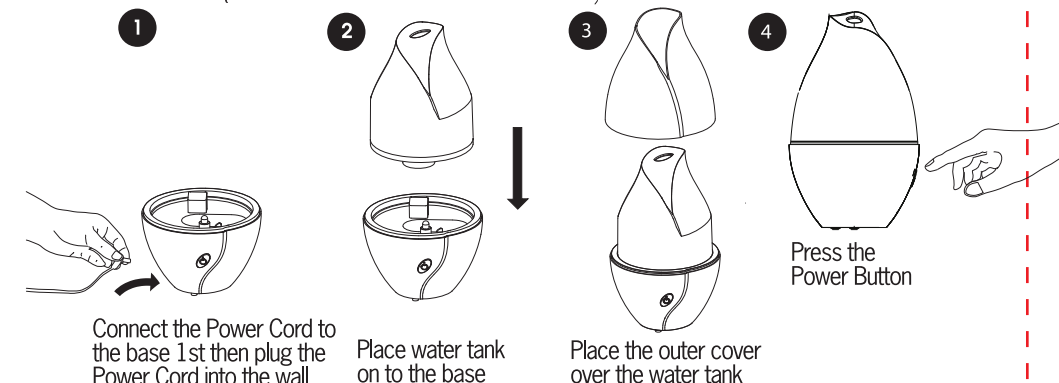
How it works

NOW® Solutions Ultrasonic Faux Wood Grain Oil Diffuser uses high frequency ultrasonic technology that vibrates water inside the unit creating an ultra fine mist into the air. When essential oils are added, they are immediately dispersed into the air providing healthful benefits and helping to ionize the air. It can be used in a bedroom, living room, office area or anywhere you want to create a relaxing environment.

What's included



How to operate

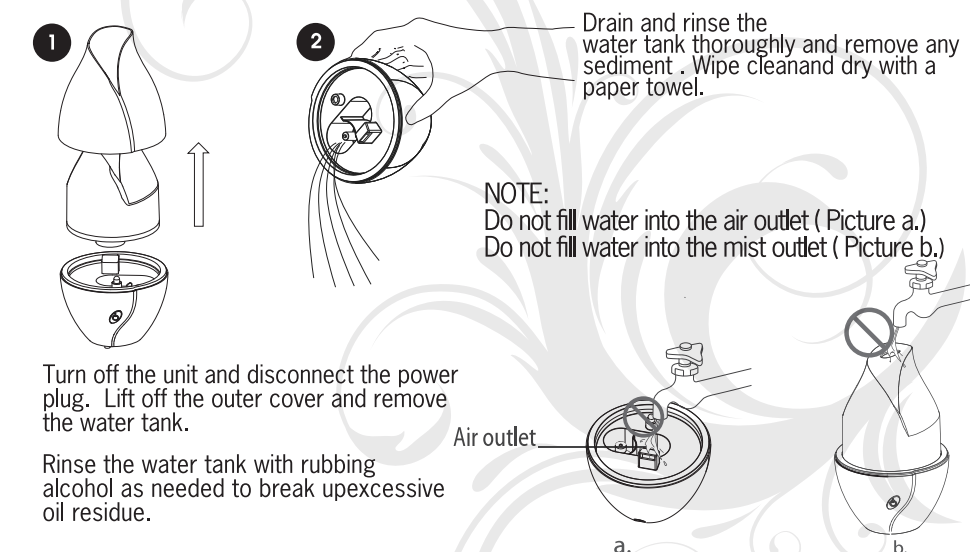


- 1st press : Aroma diffuser ON, Night light OFF
- 2nd press: Aroma diffuser ON, Night light ON
- 3rd press: Aroma diffuser OFF
- 4th press: Night Light OFF
- The unit automatically shuts off when empty

NOTE: Oil mist can damage wooden and painted surfaces, wipe up any residue quickly and often.

How to clean

We recommend that you clean your NOW® Solutions Ultrasonic Faux Wood Grain Oil Diffuser every time you change oils. Oils are corrosive, and over time, they build up on the ceramic parts. To ensure a long life for your diffuser, follow these simple steps:



Please read the instructions carefully before using. Manufacturer accepts no liability for damage caused by incorrect use of the NOW® Solutions Ultrasonic Faux Wood Grain Oil Diffuser.

Warning and cautions	No allowed actions	Strictly prohibited
⚠	⊘	⚡
1. Clean the unit when changing to a different oil.		
2. Clean the unit by rinsing the water tank and wiping it dry with a clean cloth.		
3. Do not use detergents, solvents or abrasive agents to clean the diffuser unit.		
4. Shut off and unplug the power before cleaning.		
5. Use the original adapter provided by the manufacture.		
6. If you don't use the device for a long time, unplug and pour water out.		
7. Never use steamed water or very cold water. Never use corrosive solvent to clean product.		
8. Never touch water level sensor and avoid product hitting other objects.		
9. Never put your hand above the ceramic disc when product is working, as this could cause pain and damage the machine.		
10. Never wrap the adapter with a cloth or paper, etc. Otherwise, it cannot dissipate heat normally and may cause deformation and burn the membrane from a short circuit. Never touch the adapter with wet hands.		
11. Do not use other liquids except for water & drops of essential or fragrance oils.		
12. Do not aim the device at walls, ceilings, or furniture surfaces as excess moisture could cause water damage.		
13. Do not take this unit apart exposing electrical parts. Call customer service for assistance and guarantee information.		
14. Never place on loose fabric that can block air flow and prevent the unit from misting and ventilating properly.		