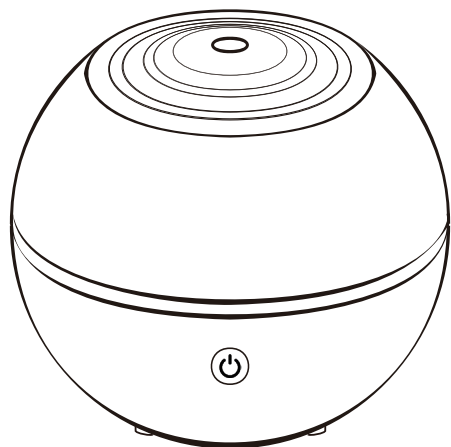


Aroma Orb Diffuser

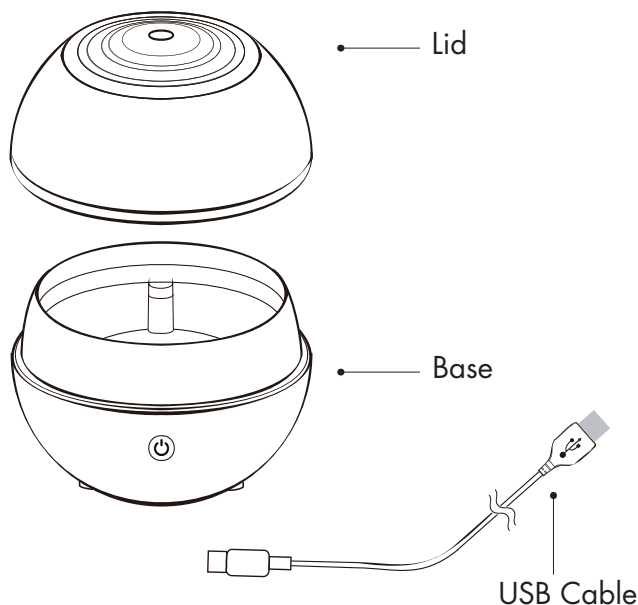
instructions & care

PARTS 1

SPECIFICATIONS 2



Please read instructions before use.



Item No.	7481
Misting Modes	Continuous/Off
Light Modes	Color Rotating/Fixed/Off
Capacity	150 ml/ 5.0 fl oz
Run Time	Up to 7 hours
Power	DC 5V 1A
Dimensions	5.118" d x 4.46" h

PRECAUTION 3

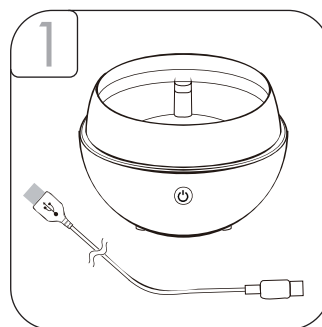
DO NOT USE DISTILLED WATER

Please read the instructions carefully before using. The manufacturer accepts no liability for damage caused by incorrect use of the Essential Oil Diffuser

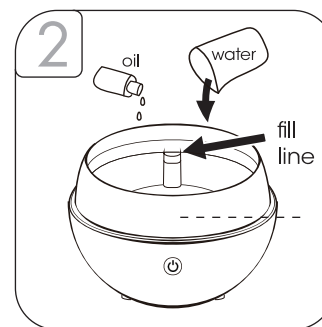
- ⚠ Warnings and cautions
- ⊘ No allowed actions
- ❗ Strictly prohibited

1. Clean the unit when changing to a different oil.
2. Clean the unit by rinsing the water tank and wiping it dry with a clean cloth.
3. Do not use detergents, solvents or abrasive agents to clean the diffuser unit.
4. Shut off and unplug the power before cleaning.
5. Use the original adapter provided by the manufacturer.
6. If you don't use the device for a long time, unplug and pour water out.
7. Never use steamed water or very cold water.
8. Never touch water level sensor and avoid product hitting other objects.
9. Never put your hand above the ceramic disc when product is working, as this could cause pain and damage the machine.
10. Never wrap the adapter with a cloth or paper, etc. Otherwise, it cannot dissipate heat normally and may cause deformation and burn the membrane from a short circuit. Never touch the adapter with wet hands.
11. Do not use other liquids except for water and drops of essential or fragrance oils.
12. Do not aim the device at walls, ceilings, or furniture surfaces as excess moisture could cause water damage.
13. Do not take this unit apart exposing electrical parts. Call customer service for assistance and guarantee information.
14. Never place on loose fabric that can block air flow and prevent the unit from misting and ventilating properly.

OPERATION 4



Remove the cover and plug the USB cable into the diffuser.

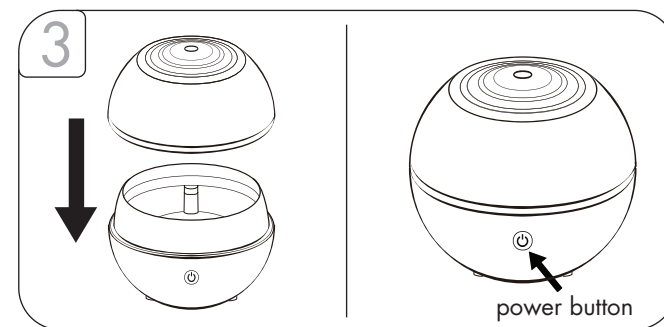


Fill with room temperature tap water to the max fill line (up to 150ml).

Do not fill above max fill line.

Add 5-10 drops of preferred essential oil.

OPERATION 5



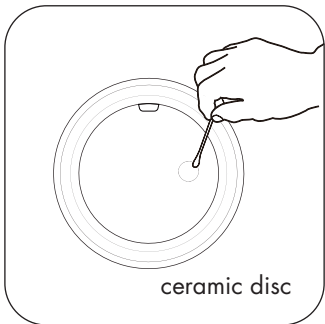
Lower the cover and press the power button to turn on.

1st press: Power on, lights on, color rotating, mist continuously.

2nd press: Select the display color and mist continuously.

3rd press: Light off, mist continuously.

4th press: Power off.



First, disconnect from power, and using a cotton swab with warm water, gently clean the ceramic disc to remove oil residue.

Cleaning:
Rinse with warm water & wipe clean as follows:

1. Wipe with soft damp cloth to clean.
2. Wipe with soft cloth and rubbing alcohol when needed to break up excessive oil residue.

- Do not fill base under running water.
- Do not use purified or distilled water.
- Do not move once unit has been filled with water.

- We recommend cleaning the unit every time you change oils.
- Do not use detergents or abrasive agents to clean the diffuser unit.
- Do not return this diffuser to the retailer. Please contact the manufacturer's customer service for assistance.

CAUTION:

Do not use on wooden or painted surfaces that can be damaged by essential oil.

Keep the unit upright at all times. Do not tilt unit at any time as water may spill and damage furnishings and fabrics.



CAUTION: Keep away from children and pets.

SYMPTOM	CAUSE	SOLUTION
No mist	Unit is out of water or the temperature of water is too cold.	Add additional tap water or change to warmer water.
No mist or little mist	Unit needs to be cleaned. Oils are clinging to ceramic disc or sensor.	Clean unit as advised in instructions with clean water and clean ceramic disc/sensor with brush or swab.
	Water level is higher than max level line.	Clean unit and add water 1/2 way to fill line and additional water after getting mist. Remove excess water and restart the diffuser.
Blinking lights	Water level indicator is dirty.	Clean unit as advised. Pay particular attention to swab the sensor/disc inside the bottom of the unit.
	Condensation may have accumulated inside the top.	Gently tap the top cover to allow water to drop back into the tank.
Unit will not stop running even though empty	Water level indicator is dirty.	Clean unit as advised. Pay particular attention to the sensor/disc inside the bottom of unit.
No misting and unit is spraying water	Water is too cold.	Change to warmer water.

This diffuser has a 1-year manufacturer guarantee. Please call customer service at 1-888-548-0040 for assistance. Do not return to the retailer.

Aroma Orb Diffuser

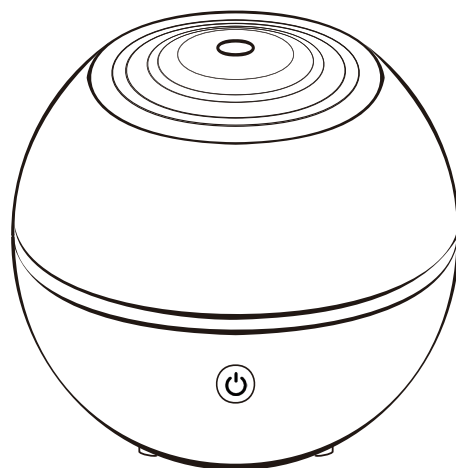
LIMITED ONE YEAR GUARANTEE

Purchase of this diffuser includes a One Year Limited Guarantee that covers manufacturing defects. It excludes normal wear and tear, damage caused by improper use, oil damage to the outside of the diffuser or oil damage to any other personal materials that the oil may come into contact with.

If you believe your unit is defective or malfunctioning, please contact us at 888-548-0040.

Note that customers are responsible for return shipping costs if seeking replacement, even when covered by a guarantee. Manufacturer reserves sole discretion to determine whether replacement is needed. All diffusers sent to manufacturer for inspection must be clean and free of any oil residue or it will be returned without inspection.

THIS GUARANTEE IS EXCLUSIVE OF ALL OTHER GUARANTEES OFFERED BY THE MANUFACTURER, EXPRESSED OR IMPLIED, ALL OF WHICH ARE EXPRESSLY DISCLAIMED.



Distributed by NOW Foods
Bloomingdale, IL 60108, USA
nowfoods.com/essential-oils

Customer Service 888-548-0040

Product of China

We will be happy to assist you with any questions. Please contact our Customer Service Department at 1-888-548-0040.



nowfoods.com/essential-oils