

## Specifications

Model	7521
Color	Bamboo wood cover and base
Capacity	150 ml/5 fl. oz.
Run Time	Up to 14 Hrs Intermittent/7 Hrs Continuous
Features	Timer setting 1 Hr/2 Hr int/cont. Rotating LED lights
Misting Modes	On/Intermittent/Off
Coverage	Up to 1,000 square feet
Rated Power	12W
Adapter Power	100-240V, 24V 0.5A

## Troubleshooting

SYMPTOM	CAUSE	SOLUTION
Cannot smell oil when unit starts	Majority of the oil is still in the water tank	Add an additional 3-5 drops of oil in the water when starting.
No mist	Using incorrect water, distilled or purified	Use tap water (without filter).
	Unit is out of water	Add additional water.
No mist or little mist	Unit needs to be cleaned. Oils are clinging to ceramic disc or sensor	Clean unit as advised in instructions with clean water and clean ceramic disc/sensor with brush or swab.
	Water level is higher than max level line	Clean unit and add water halfway to fill line and add additional water after getting mist. Remove excess water and restart the diffuser.
Blinking lights	Water level indicator is dirty	Clean unit as advised. Pay particular attention to swab the sensor/disc inside the bottom of the unit.
	Condensation may have accumulated inside the top	Gently tap the top cover to allow water to drop back into the tank.
Unit will not stop running even though empty	Water level indicator is dirty	Clean unit as advised. Pay particular attention to swab the sensor/disc inside the bottom of unit.
No misting and unit is spraying water	Water is too cold	Change to warmer water.

**CAUTION: Keep away from children and pets.**

This diffuser has a 1-year manufacturer guarantee.  
Please call customer service at 1-888-548-0040 for assistance.  
Do not return to the retailer.

Distributed by NOW Foods  
Bloomington, IL 60108, USA  
[nowfoods.com/essential-oils](http://nowfoods.com/essential-oils)

Customer Service 888-548-0040

Product of China



**now**<sup>®</sup>  
solutions

## NOW<sup>®</sup> Essential Oils

NOW<sup>®</sup> Essential Oils are genuine reflections of the botanicals from which they're borne. When properly diffused, these botanical extracts can encourage wellness, tranquility, and even inspiration. Our essential oils are highly concentrated and identity verified to ensure quality, and we use only fresh botanicals bursting with vitality and beneficial compounds. For nearly 30 years NOW has been offering pure, premium essential oils, and our expertise, strict attention to detail, meticulous extraction methods, and focus on safety and purity are what set NOW<sup>®</sup> Essential Oils apart. We take the necessary steps to ensure our oils are brought to you in a manner that's scientifically and environmentally responsible.



For more information visit [nowfoods.com/essential-oils](http://nowfoods.com/essential-oils).



*Bamboo Ultrasonic Oil Diffuser*

[nowfoods.com/essential-oils](http://nowfoods.com/essential-oils)

Instructions & Code



# Essential Oil Recipes

Add the following oils to a diffuser and enjoy:

## Balancing Blends

- Daily Balance**  
 2 drops of NOW® Geranium Oil  
 2 drops of NOW® Rose Absolute Oil  
 2 drops of NOW® Clary Sage Oil

- Head Ease**  
 2 drops of NOW® Lavender Oil  
 2 drops of NOW® Peppermint Oil  
 2 drops of NOW® Chamomile Oil

## Purifying Blends

- Purifying Room**  
 1 drop of NOW® Tea Tree Oil  
 1 drop of NOW® Grapefruit Oil  
 10 drops of NOW® Lemon Oil

- Spring Cleaning**  
 10 drops of NOW® Lemongrass Oil  
 5 drops of NOW® Lemon Oil  
 1 drop of NOW® Eucalyptus Oil

## Uplifting Blends

- Summer Fun**  
 2 drops of NOW® Lavender Oil  
 2 drops of NOW® Peppermint Oil  
 2 drops of NOW® Grapefruit Oil

- Energizing**  
 1 drop of NOW® Peppermint Oil  
 1 drop of NOW® Rosemary Oil  
 2 drops of NOW® Cinnamon Leaf Oil

## Relaxing Blends

- Peace of Mind**  
 5 drops of NOW® Lavender Oil  
 3 drops of NOW® Chamomile Oil

- Calming Night**  
 2 drops of NOW® Cypress Oil  
 2 drops of NOW® Lavender Oil  
 2 drops of NOW® Marjoram Oil

## Romance Blends

- Love is in the Air**  
 1 drop of NOW® Patchouli Oil  
 3 drops of NOW® Jasmine Absolute Oil  
 5 drops of NOW® Geranium Oil

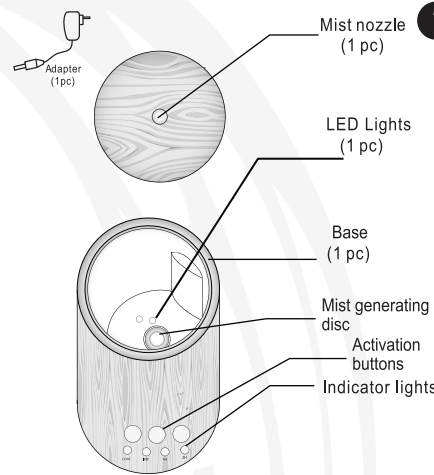
- Things are Just Rosey**  
 1 drop of NOW® Geranium Oil  
 15 drops of NOW® Rose Absolute Oil

Thank you for your purchase of NOW® Solutions Real Bamboo Ultrasonic Diffuser. Please read the instructions carefully before using.

## How it works

NOW® Solutions Real Bamboo Ultrasonic Oil Diffuser uses high frequency ultrasonic technology that vibrates cool water inside the unit, creating an ultra fine mist. When essential oils are added, they are immediately dispersed into the air, providing immediate healthful benefits and helping to ionize the air. It can be used in a bedroom, living room, office area or anywhere you want to create a relaxing environment.

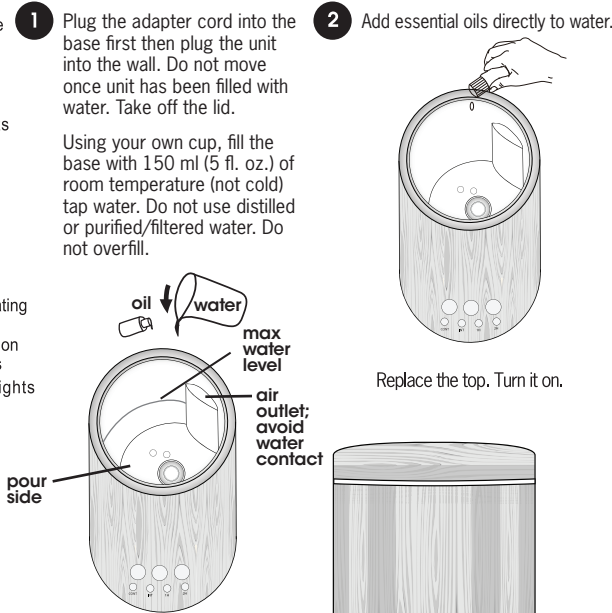
## What's included



**1** Plug the adapter cord into the base first then plug the unit into the wall. Do not move once unit has been filled with water. Take off the lid.

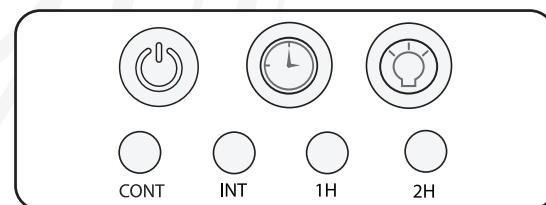
Using your own cup, fill the base with 150 ml (5 fl. oz.) of room temperature (not cold) tap water. Do not use distilled or purified/filtered water. Do not overfill.

## How to add essential oils



## How to operate

5 Modes of Operation:



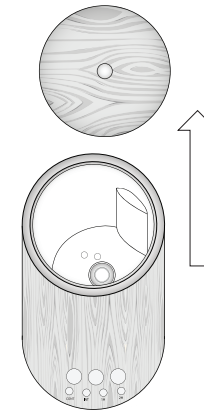
- Press Power: 1x Continuous, 2x Intermittent, 3x Off  
 Press Timer: 1 Hour, 2 Hours  
 Press Light: 1 Rotating, 2 Fixed, 3 Off

NOTE: Oil mist can damage wooden and painted surfaces, wipe up any residue quickly and often.

## How to clean

We recommend that you clean your NOW® Solutions Real Bamboo Ultrasonic Oil Diffuser every time you change oils. Oils are corrosive, and over time they build up on the ceramic parts. To ensure a long life for your diffuser, follow these simple cleaning and maintenance instructions:

Turn off the unit and disconnect the power plug. Lift off the lid and empty any water remaining into a sink.



- Only use clean water at room temperature to fill the water tank.
- Rinse the water tank and wipe it dry with a clean cloth every time you use a different type of essential oil.
- Use a damp cloth to clean the exterior of the unit.
- Use a cotton swab or brush to clean the ceramic disc.
- Keep water from entering the vent.
- Do not move once unit has been filled with water.
- Do not use detergents, solvents or abrasive agents to clean the diffuser unit.
- Disconnect the diffuser unit from power before cleaning.
- Use the diffuser unit on a dry and even surface.

Please read the instructions carefully before using. Manufacturer accepts no liability for damage caused by incorrect use of the NOW® Real Bamboo Ultrasonic Oil Diffuser.



⚠	1. Clean the unit when changing to a different oil.
⚠	2. Clean the unit by rinsing the water tank and wiping it dry with a clean cloth.
⊘	3. Do not use detergents, solvents or abrasive agents to clean the diffuser unit.
⚠	4. Shut off and unplug the power before cleaning.
⚠	5. Use the original adapter provided by the manufacturer.
⚠	6. If you don't use the device for a long time, unplug and pour water out.
⊘	7. Never use steamed water or very cold water. Never use corrosive solvent to clean product.
⊘	8. Never touch water level sensor and avoid product hitting other objects.
⊘	9. Never put your hand above the ceramic disc when product is working, as this could cause pain and damage the machine.
⚠	10. Never wrap the adapter with a cloth or paper, etc. Otherwise, it cannot dissipate heat normally and may cause deformation and burn the membrane from a short circuit. Never touch the adapter with wet hands.
⊘	11. Do not use other liquids except for water and drops of essential or fragrance oils.
⊘	12. Do not aim the device at walls, ceilings, or furniture surfaces as excess moisture could cause water damage.
⚠	13. Do not take this unit apart exposing electrical parts. Call customer service for assistance and guarantee information.
⚠	14. Never place on loose fabric that can block air flow and prevent the unit from misting and ventilating properly.