

## Specifications

Model	7519
Color	Faux Wood Grain Cover with White Water Tank
Capacity	500 ml/17 fl. oz.
Run Time	Up to 8 hours
Features	On/Off, Color Rotating LED Lights: Blue, Green, and Red
Coverage	Up to 1,000 square feet
Rated Power	12W
Adapter Power	100-240V, 24V0.5A

## Troubleshooting

SYMPTOM	CAUSE	SOLUTION
Cannot smell oil when unit starts	Majority of the oil is still in the water tank	Add an additional 3-5 drops of oil in the water when starting.
No mist or little mist	Using incorrect water, distilled or purified	Use tap water (without filter).
	Too much water released or unit is out of water	Add additional water.
		Dump excess base water, replace tank and turn power on. Do not move unit once the tank has been placed on top of the base.
	Tap water is too cold	Empty tank and refill with lukewarm tap water.
Water level is higher than max level line	Water level is higher than max level line	Clean unit and add water ½ way to fill line and additional water after getting mist.
		Clean unit as advised. Pay particular attention to swab the sensor/disc inside the bottom of unit.
Blinking lights	Water level indicator is dirty	Clean unit as advised. Pay particular attention to swab the sensor/disc inside the bottom of unit.
Unit will not stop running even though empty	Water level indicator is dirty	Clean unit as advised. Pay particular attention to swab the sensor/disc inside the bottom of unit.

**CAUTION: Keep away from children and pets.**

This diffuser has a 1-year manufacturer guarantee.  
Please call customer service at 1-888-548-0040 for assistance.  
Do not return to the retailer.

Distributed by NOW Foods  
Bloomington, IL 60108, USA  
[nowfoods.com/essential-oils](http://nowfoods.com/essential-oils)

Customer Service 888-548-0040

Product of China



**now**<sup>®</sup>  
solutions

## Essential Oil Info

NOW<sup>®</sup> Essential Oils are genuine reflections of the botanicals from which they're borne. When properly diffused, these botanical extracts can encourage wellness, tranquility and even inspiration. Our essential oils are highly concentrated and identity verified to ensure quality, and we use only fresh botanicals bursting with vitality and beneficial compounds. Strict attention to detail, meticulous extraction methods, and a focus on safety and purity are what set NOW<sup>®</sup> Essential Oils apart, and we take the necessary steps to ensure our oils are brought to you in a manner that's scientifically and environmentally responsible.



For more information visit [nowfoods.com/essential-oils](http://nowfoods.com/essential-oils).

*Ultrasonic Faux Wood Grain Oil Diffuser*

[nowfoods.com/essential-oils](http://nowfoods.com/essential-oils)

instructions & care



## Essential Oil Recipes

Add the following oils to a diffuser and enjoy:

### Balancing Blends

#### Daily Balance

- 2 drops of NOW® Geranium Oil
- 2 drops of NOW® Rose Absolute Oil
- 2 drops of NOW® Clary Sage Oil

#### Head Ease

- 3 drops of NOW® Lavender Oil
- 3 drops of NOW® Peppermint Oil
- 3 drops of NOW® Chamomile Oil

### Purifying Blends

#### Purifying Room

- 1 drop of NOW® Tea Tree Oil
- 1 drop of NOW® Grapefruit Oil
- 10 drops of NOW® Lemon Oil

#### Spring Cleaning

- 10 drops of NOW® Lemongrass Oil
- 5 drops of NOW® Lemon Oil
- 1 drop of NOW® Eucalyptus Oil

### Uplifting Blends

#### Summer Fun

- 1 drop of NOW® Lavender Oil
- 1 drop of NOW® Peppermint Oil
- 1 drop of NOW® Grapefruit Oil

#### Energizing

- 1 drop of NOW® Peppermint Oil
- 1 drop of NOW® Rosemary Oil
- 2 drops of NOW® Cinnamon Leaf Oil

### Relaxing Blends

#### Peace of Mind

- 10 drops of NOW® Lavender Oil
- 6 drops of NOW® Chamomile Oil

#### Calming Night

- 4 drops of NOW® Cypress Oil
- 4 drops of NOW® Lavender Oil
- 4 drops of NOW® Marjoram Oil

### Romance Blends

#### Love is in the Air

- 1 drop of NOW® Patchouli Oil
- 3 drops of NOW® Jasmine Absolute Oil
- 5 drops of NOW® Geranium Oil

#### Things are Just Rosey

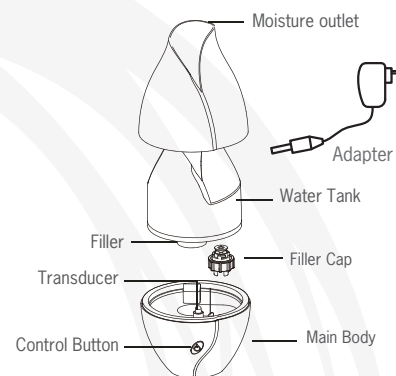
- 1 drop of NOW® Geranium Oil
- 15 drops of NOW® Rose Absolute Oil

Congratulations on your purchase of NOW® Solutions Ultrasonic Faux Wood Oil Diffuser designed for indoor use. Please read the instructions carefully before using.

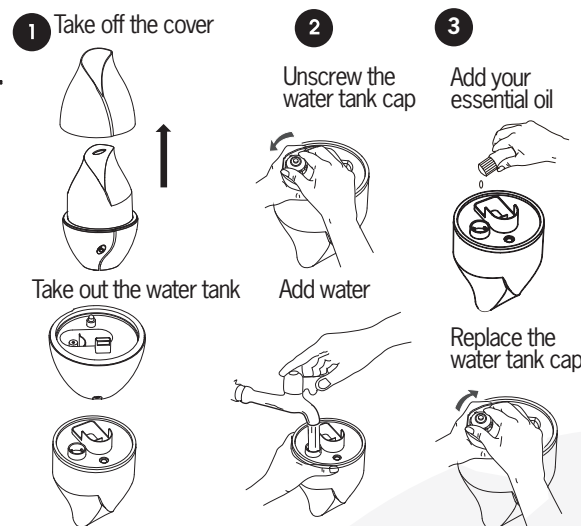
### How it works

NOW® Solutions Ultrasonic Oil Diffuser uses high frequency ultrasonic technology that vibrates cool water inside the unit, creating an ultra-fine mist. When essential oils are added, they are immediately dispersed into the air, providing healthful benefits and helping to ionize the air. It can be used in a bedroom, living room, office area or anywhere you want to create a relaxing environment.

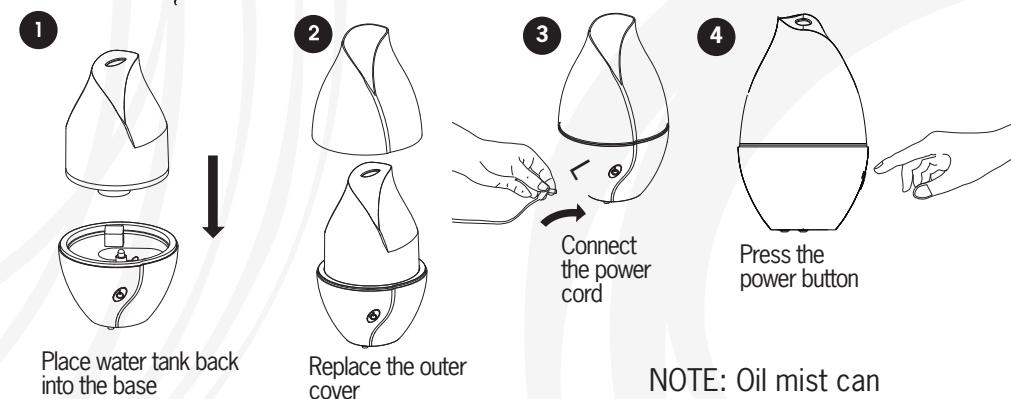
### What's included



### How to add essential oil



### How to operate

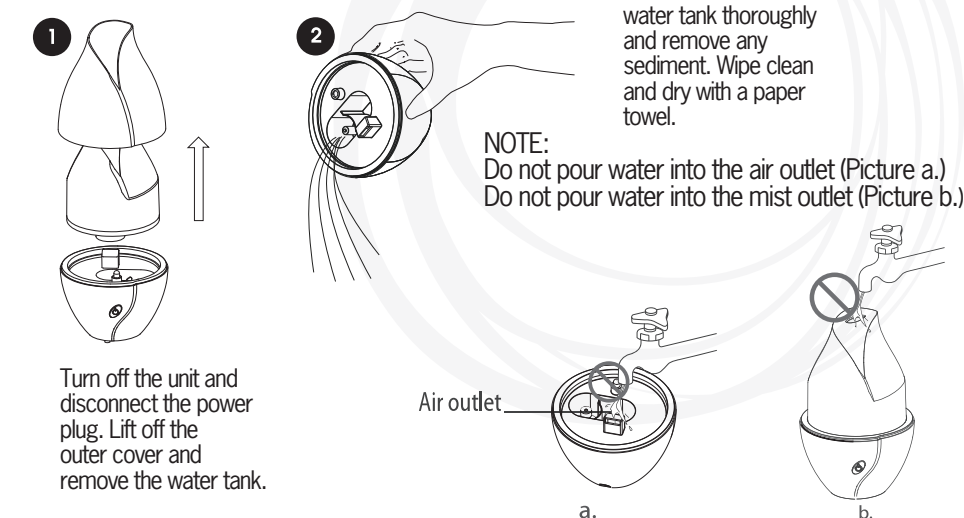


- 1st press: Aroma diffuser ON, night light OFF
- 2nd press: Aroma diffuser ON, night light ON
- 3rd press: Aroma diffuser OFF
- 4th press: Night light OFF
- The unit automatically shuts off when empty

NOTE: Oil mist can damage wooden and painted surfaces; wipe up any residue quickly and often.

### How to clean

We recommend that you clean your NOW® Solutions Ultrasonic Oil Diffuser every time you change oils. Oils are corrosive, and over time they build up on the ceramic parts. To ensure the long life of your diffuser, follow these simple steps:



Please read the instructions carefully before using. Manufacturer accepts no liability for damage caused by incorrect use of the NOW® Solutions Ultrasonic Oil Diffuser.

⚠ Warning and cautions	⊘ No allowed actions	❗ Strictly prohibited
⚠	⊘	❗
1. Clean the unit when changing to a different oil.	2. Clean the unit by rinsing the water tank and wiping it dry with a clean cloth.	3. DO NOT use detergents or abrasive agents to clean the diffuser unit.
4. Shut off and unplug the power before cleaning.	5. Use the original adapter provided by the manufacturer.	6. If you don't use the device for a long time, unplug and pour water out.
7. Never use steamed water or very cold water.	8. Never touch water level sensor and avoid product hitting other objects.	9. Never put your hand above the ceramic disc when product is working, as this could cause pain and damage the machine.
10. Never wrap the adapter with a cloth or paper, etc. Otherwise, it cannot dissipate heat normally and may cause deformation and burn the membrane causing a short circuit. Never touch the adapter with wet hands.	11. Do not use other liquids except for water and drops of essential or fragrance oils.	12. Do not aim the device at walls, ceilings or furniture surfaces as excess moisture could cause water damage.
13. Do not take this unit apart, exposing electrical parts. Call customer service for assistance and guarantee information.		

For more recipe ideas visit [nowfoods.com/essential-oils](http://nowfoods.com/essential-oils)