

Specifications

Model	7486
Color	Black
Capacity	170 ml/5.75 fl. oz.
Run Time	Up to 6 hours
Features	Rotating LED Lights: Red, Green, Blue
Coverage	Up to 1,000 square feet
Rated Power	12W
Adapter Power	100-240V AC

Troubleshooting

SYMPTOM	CAUSE	SOLUTION
No mist	Unit is out of water	Add additional water.
No mist or little mist	Unit needs to be cleaned; oils are clinging to ceramic disc or sensor	Clean unit as advised in instructions with clean water and clean ceramic disc/sensor with brush or swab.
	Water level is higher than max level line	Clean unit and add water 1/2 way to fill line and additional water after getting mist. Remove excess water and restart the diffuser.
Blinking lights	Water level indicator is dirty	Clean unit as advised, making sure to swab the sensor/disc inside the bottom of the unit.
Unit will not stop running even though empty	Water level indicator is dirty	Clean unit as advised, making sure to swab the sensor/disc inside the bottom of the unit.
No misting and unit is spraying water	Water is too cold	Change to warmer water.

CAUTION: Keep away from children and pets.

This diffuser has a 1-year manufacturer guarantee.
Please call customer service at 1-888-548-0040 for assistance.
Do not return to the retailer.

Distributed by NOW Foods
Bloomingdale, IL 60108 USA
nowfoods.com/essential-oils

Customer Service 888-548-0040

Product of China

Essential Oil Info

NOW® Essential Oils are genuine reflections of the botanicals from which they're borne. When properly diffused, these botanical extracts can encourage wellness, tranquility and even inspiration. Our essential oils are highly concentrated and identity verified to ensure quality, and we use only fresh botanicals bursting with vitality and beneficial compounds. Strict attention to detail, meticulous extraction methods, and a focus on safety and purity are what set NOW® Essential Oils apart, and we take the necessary steps to ensure our oils are brought to you in a manner that's scientifically and environmentally responsible.



For more information visit nowfoods.com/essential-oils.



now®
solutions



Ultrasonic Metal Touch Oil Diffuser

nowfoods.com/essential-oils

instructions & care



Essential Oil Recipes

Add the following oils to a diffuser and enjoy:

Balancing Blends

- Daily Balance**
 2 drops of NOW® Geranium Oil
 2 drops of NOW® Rose Absolute Oil
 2 drops of NOW® Clary Sage Oil

- Head Ease**
 3 drops of NOW® Lavender Oil
 3 drops of NOW® Peppermint Oil
 3 drops of NOW® Chamomile Oil

Purifying Blends

- Purifying Room**
 1 drop of NOW® Tea Tree Oil
 1 drop of NOW® Grapefruit Oil
 10 drops of NOW® Lemon Oil

- Spring Cleaning**
 10 drops of NOW® Lemongrass Oil
 5 drops of NOW® Lemon Oil
 1 drop of NOW® Eucalyptus Oil

Uplifting Blends

- Summer Fun**
 1 drop of NOW® Lavender Oil
 1 drop of NOW® Peppermint Oil
 1 drop of NOW® Grapefruit Oil

- Energizing**
 1 drop of NOW® Peppermint Oil
 1 drop of NOW® Rosemary Oil
 2 drops of NOW® Cinnamon Leaf Oil

Relaxing Blends

- Peace of Mind**
 10 drops of NOW® Lavender Oil
 6 drops of NOW® Chamomile Oil

- Calming Night**
 4 drops of NOW® Cypress Oil
 4 drops of NOW® Lavender Oil
 4 drops of NOW® Marjoram Oil

Romance Blends

- Love is in the Air**
 1 drop of NOW® Patchouli Oil
 3 drops of NOW® Jasmine Absolute Oil
 5 drops of NOW® Geranium Oil

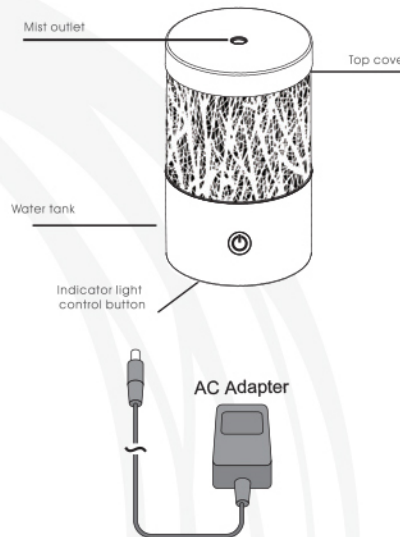
- Things are Just Rosey**
 1 drop of NOW® Geranium Oil
 15 drops of NOW® Rose Absolute Oil

Congratulations on your purchase of NOW® Solutions Ultrasonic Metal Touch Oil Diffuser. Please read the instructions carefully before using.

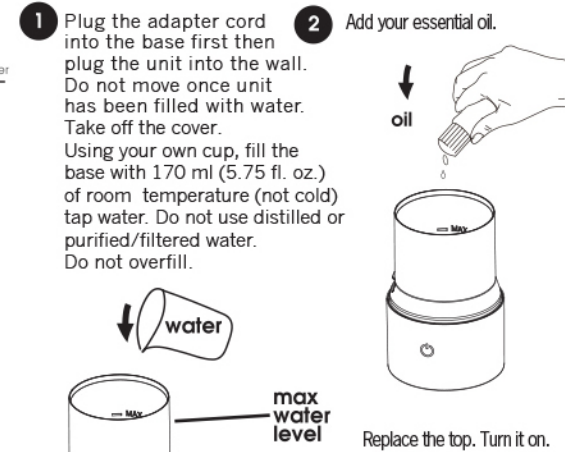
How it works

NOW® Solutions Ultrasonic Metal Touch Oil Diffuser uses high frequency ultrasonic technology that vibrates water inside the unit, creating an ultra fine mist. When essential oils are added they are immediately dispersed into the air, providing healthful benefits and helping to ionize the air.

What's included



How to add essential oil



How to operate

Continuous Mist:
Continuous misting mode.

- Modes of Operation.**
 1st push: On, rotating LED lights on
 2nd push: On, lights off
 3rd push: Off, lights off

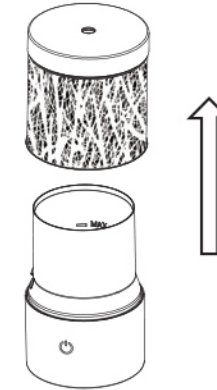


NOTE: Oil mist can damage wooden and painted surfaces, wipe up any residue quickly and often.

How to clean

We recommend that you clean your NOW® Solutions Ultrasonic Metal Touch Oil Diffuser every time you change oils. Oils are corrosive, and over time they build up on the ceramic parts. To ensure long life for your diffuser, follow these simple cleaning and maintenance instructions:

Turn off the unit and disconnect the power plug. Lift off the outer cover and remove the water tank. Empty any water remaining into a sink.



- Disconnect the diffuser unit from power before cleaning.
- Only use clean tap water at room temperature to fill the water tank.
- Rinse the water tank and wipe it dry with a clean cloth every time you use a different type of essential oil.
- Use a damp cloth to clean the exterior of the unit.
- Use a cotton swab or brush to clean the ceramic disc.
- Keep water from entering the vent.
- Do not move once unit has been filled with water.
- Do not use detergents, solvents or abrasive agents to clean the diffuser unit.
- Use the diffuser unit on a dry and even surface.

Please read the instructions carefully before using. Manufacturer accepts no liability for damage caused by incorrect use of the NOW® Solutions Ultrasonic Metal Touch Oil Diffuser.

- ⚠ Warning and cautions
- 🚫 No allowed actions
- ❗ Strictly prohibited

⚠	1. Clean the unit when changing to a different oil.
⚠	2. Clean the unit by rinsing the water tank and wiping it dry with a clean cloth.
🚫	3. Do not use detergents, solvents or abrasive agents to clean the diffuser unit.
⚠	4. Shut off and unplug the power before cleaning.
⚠	5. Use the original adapter provided by the manufacturer.
⚠	6. If you don't use the device for a long time, unplug and pour water out.
🚫	7. Never use steamed water or very cold water. Never use corrosive solvent to clean product.
🚫	8. Never touch water level sensor and avoid product hitting other objects.
🚫	9. Never put your hand above the ceramic disc when product is working, as this could cause pain and damage the machine.
❗	10. Never wrap the adapter with a cloth or paper, etc. Otherwise, it cannot dissipate heat normally and may cause deformation and burn the membrane from a short circuit. Never touch the adapter with wet hands.
🚫	11. Do not use other liquids except for water and drops of essential or fragrance oils.
🚫	12. Do not aim the device at walls, ceilings, or furniture surfaces as excess moisture could cause water damage.
❗	13. Do not take this unit apart exposing electrical parts. Call customer service for assistance and guarantee information.
⚠	14. Never place on loose fabric that can block air flow and prevent the unit from misting and ventilating properly.