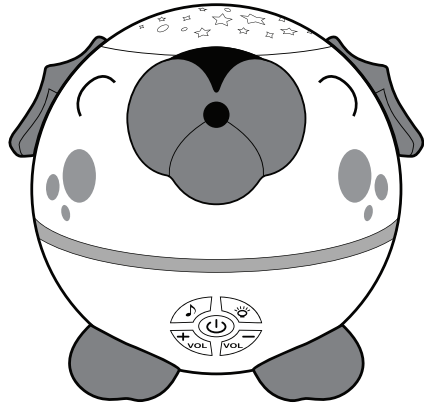
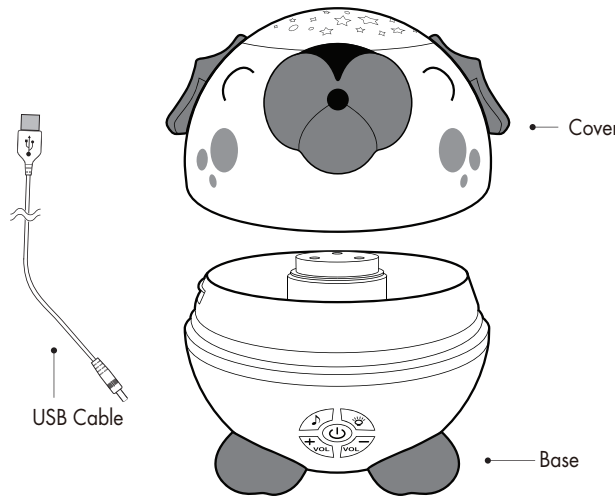


INSTRUCTIONS & CARE



Please read the instructions carefully before using.



Thank you for your purchase of the Sleepy Puppy Diffuser.

Item Number	7484
Water Capacity	150 mL
Run Time	Up to 12 hours
Misting Modes	Continuous or Off
Light Modes	Warm White/Color Rotating/Off
Rotating Light Colors	Red, Green & Blue
Projection Templates	Night Sky/ Flowers/ Clouds & Kites
Coverage	Up to 400 sq. ft.
Power	5 V USB
Dimensions	5.5" x 6.25" x 5.375"
Diffuser Color	Light Brown & Dark Brown
Sound Options	Birds Chirping / River Water/ Forest Sounds/ Soft Wind

PRECAUTIONS 3

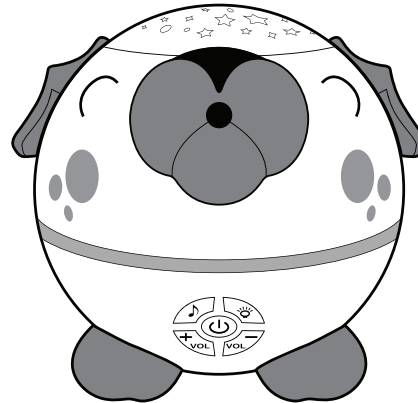
DO NOT USE DISTILLED WATER

Please read the instructions carefully before using. Manufacturer accepts no liability for damage caused by incorrect use of the Essential Oil Diffuser.

- Warning and cautions
- Not allowed
- Strictly prohibited

	1. Shut off and unplug the power before cleaning
	2. Clean the unit by rinsing the water tank and wiping it dry with a clean cloth
	3. Do not use detergents, solvents or abrasive agents to clean the diffuser unit
	4. Clean the unit when changing to a different oil
	5. Use the original adapter provided by the manufacturer
	6. If you don't use the device for a long time, unplug and pour water out
	7. Never use steamed water or very cold water
	8. Never touch water level sensor and avoid product hitting other objects
	9. Never put your hand above the ceramic disc when product is working, as this could cause pain and damage the machine
	10. Never wrap the adapter with a cloth or paper, etc. Otherwise, it cannot dissipate heat normally and may cause deformation and burn the membrane from a short circuit. Never touch the adapter with wet hands.
	11. Do not use other liquids except for water and drops of essential oils
	12. Do not aim the device at walls, ceilings or furniture surfaces as excess moisture could cause water damage
	13. Do not take this unit apart exposing electrical parts. Email customer service for assistance and guarantee information.
	14. Never place on loose fabric that can block air flow and prevent the unit from misting and ventilating properly
	15. Never leave diffuser unattended within the reach of children or pets.

PRECAUTIONS 4



We will be happy to assist you with any questions. Please contact our Customer Service Department at 1-888-548-0040.

For more information on the safe use of essential oils around children and pets, please visit:

nowfoods.com/kidseosafety
nowfoods.com/petseosafety

CAUTION: This is not a toy!
Keep out of the reach of children.
Not intended for use with pets.

LIMITED ONE YEAR GUARANTEE

Purchase of this diffuser includes a One Year Limited Guarantee that covers manufacturing defects. It excludes normal wear and tear, damage caused by improper use, oil damage to the outside of the diffuser or oil damage to any other personal materials that the oil may come into contact with.

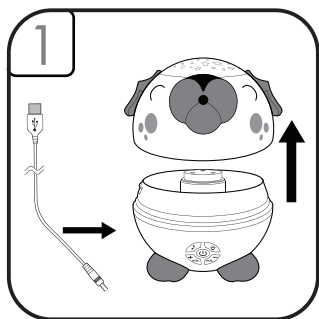
If you believe your unit is defective or malfunctioning, please contact us at 888-548-0040.

Note that customers are responsible for return shipping costs if seeking replacement, even when covered by a guarantee. Manufacturer reserves sole discretion to determine whether replacement is needed. All diffusers sent to manufacturer for inspection must be clean and free of any oil residue or it will be returned without inspection.

THIS GUARANTEE IS EXCLUSIVE OF ALL OTHER GUARANTEES OFFERED BY THE MANUFACTURER, EXPRESSED OR IMPLIED, ALL OF WHICH ARE EXPRESSLY DISCLAIMED.

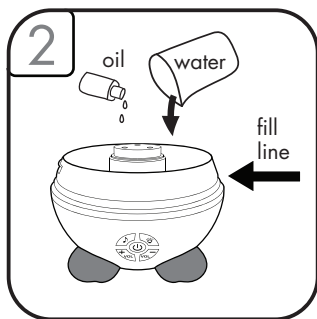
We will be happy to assist you with any questions. Please contact our Customer Service Department at 1-888-548-0040. All calls are returned within 24 hours.

OPERATION 5



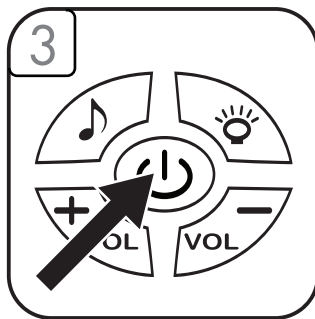
Remove the cover from the base.

Plug the USB cable into the unit first then connect to outlet.



Using a cup, fill with room temperature tap water up to the max fill line.

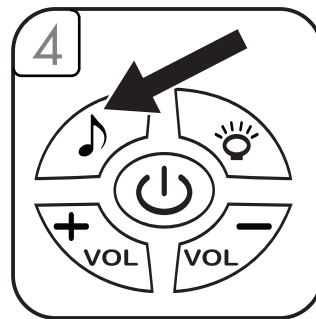
Add 5 drops of preferred essential oil and replace cover. For a list of essential oils that are not safe to diffuse around children, visit nowfoods.com/kidseosafety.



Press the power button to begin.

Press once for continuous misting.

Press twice to turn off.



To control the sound function, press the button with the music icon.

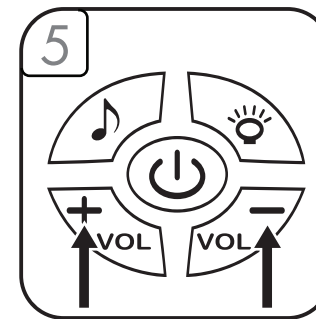
Press once for Birds & Chirping sounds.

Press twice for Running River sounds.

Press three times for Forest sounds.

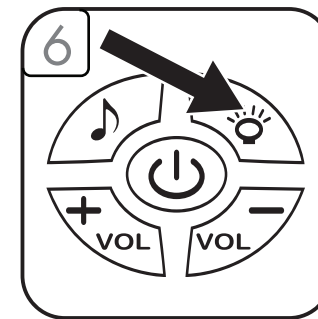
Press four times for Soft Wind sounds.

Press five times to turn off sounds.



To increase the volume of sound, press the "+ VOL" button.

To decrease the volume of sound, press the "- VOL" button.



To control the light function, press the button with the light bulb icon.

Press once for color rotating lights.

Press twice to select displayed color(s).

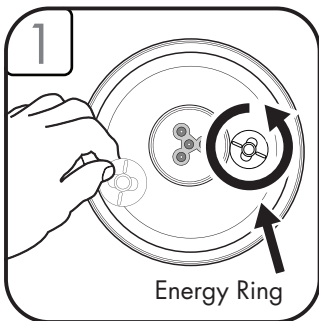
Press three times for warm white light.

Press four times to turn lights off.

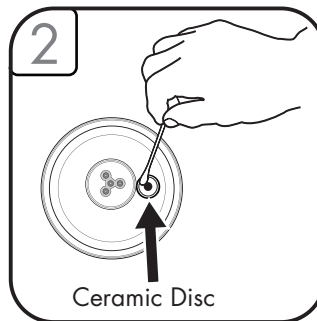
DO NOT FILL ABOVE MAX LINE.
DO NOT FILL BASE UNDER RUNNING WATER.

*IDEAL PROJECTION DISTANCE FROM THE DIFFUSER TO THE CEILING IS BETWEEN 6'-7'

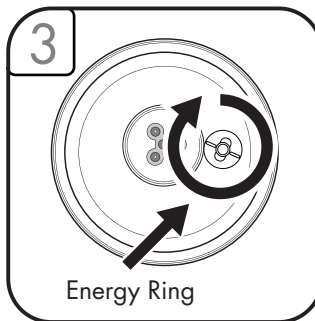
MAINTENANCE 8



First disconnect the power. Unlock the energy ring.



Wipe base with soft damp cloth. Using a cotton swab with warm water or alcohol, gently clean the ceramic disc to remove excessive oil residue.



After cleaning, replace the energy ring.

The energy ring must be in place for the diffuser to properly operate.

CLEANING/MAINTENANCE 9

Cleaning:

- Rinse with warm water and wipe clean as follows:
 - Remove the energy ring.
 - Wipe with soft damp cloth to clean.
 - Wipe with cotton swab and rubbing alcohol when needed to break up excessive oil residue.
 - Replace energy ring after cleaning.
- We recommend cleaning the unit every time you change oils.
- Do not use detergents or abrasive agents to clean the diffuser unit.

If defective in any way, do not return this diffuser to the retailer. Please contact the manufacturer's customer service for assistance.

TROUBLESHOOTING 10

SYMPTOM	CAUSE	SOLUTION
No Mist	Using incorrect water, distilled or purified	Use Tap Water (without filter)
	Unit is out of water	Add additional water
No Mist or Little Mist	Unit needs to be cleaned. Oils are clinging to ceramic disc or sensor	Clean unit as advertised in instructions with clean water and clean ceramic disc/sensor with brush or swab.
	Water level is higher than max level line	Clean unit and add water 1/2 way to fill line and additional water after getting mist.
Blinking Lights	Nozzle or cover are not assembled correctly	Make sure the cover is aligned properly.
	Water level indicator is dirty	Clean unit as advised. Pay particular attention to swab the sensor/disc inside the bottom of unit.
Unit will not stop running even though empty	Water level indicator is dirty	Clean unit as advised. Pay particular attention to swab the sensor/disc inside the bottom of unit.
No misting and unit is spraying	Water is too cold	Change to warmer water.

CAUTION: Keep out of reach of children and pets. Do not use on wooden or painted surfaces that can be damaged by essential oil. Keep the unit upright at all times. Do not tilt unit at any time as water may spill and damage furnishings and fabrics.